



Innovative Home Solutions
 18 Seagahan Road
 Armagh, BT60 2BH
 T: +44(0)28 3755 1482
 E: info@innovativehomesolutions.co.uk
 W: www.innovativehomesolutions.co.uk

CLIENT
 The Innovative
 Home Solutions Showhouse

PROJECT
 Monaghan House

Spring 2017

REVISIONS

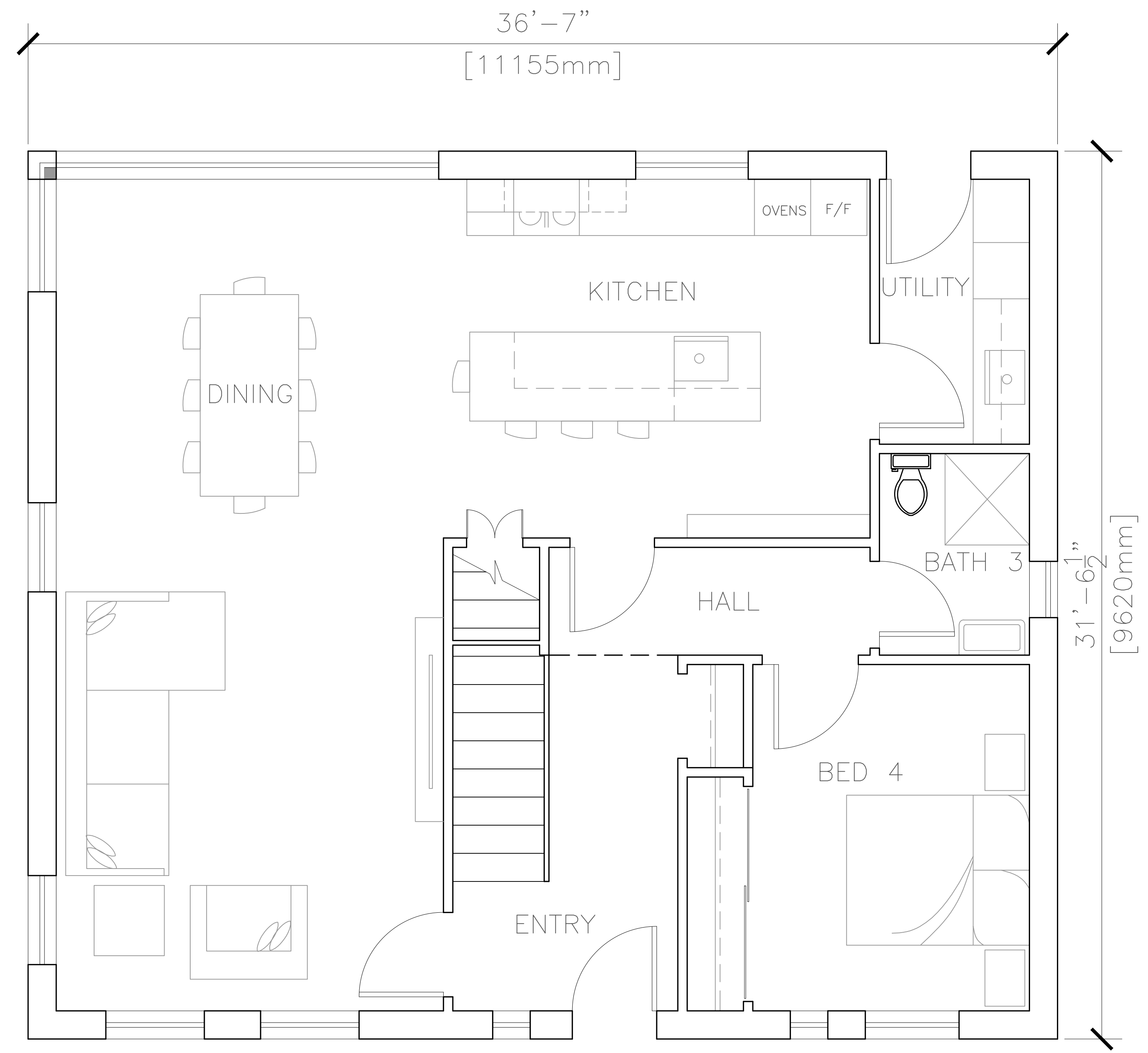
PROJECT NUMBER

DRAWING TITLE
 1ST FLOOR PLAN

SHEET NO.

SCALE 3/8"=1'-0"

DATE 03/18/2017



Copyright © 2017 Innovative Timber Frame Homes Ltd. T/A Innovative Home Solutions:
 These Designs, Plans and Drawings are the exclusive Property of Innovative Timber Frame Homes Ltd.
 T/A Innovative Home Solutions and are protected by copyright under EU, UK and Irish copyright and other laws.
 They may not be reproduced, distributed, published, modified, used to create derivative works or transmitted
 in any form or by any means, including photocopying, or other electronic or mechanical methods, wholly or in
 part, without the prior written consent of Innovative Home Solutions.