



Innovative Home Solutions  
 18 Seagahan Road  
 Armagh, BT60 2BH  
 T: +44(0)28 3755 1482  
 E: info@innovativehomesolutions.co.uk  
 W: www.innovativehomesolutions.co.uk

CLIENT  
 Innovative Timber  
 Frame Homes

PROJECT  
 Ideal Home Showhouse  
 Autumn 2015

REVISIONS

---



---



---



---

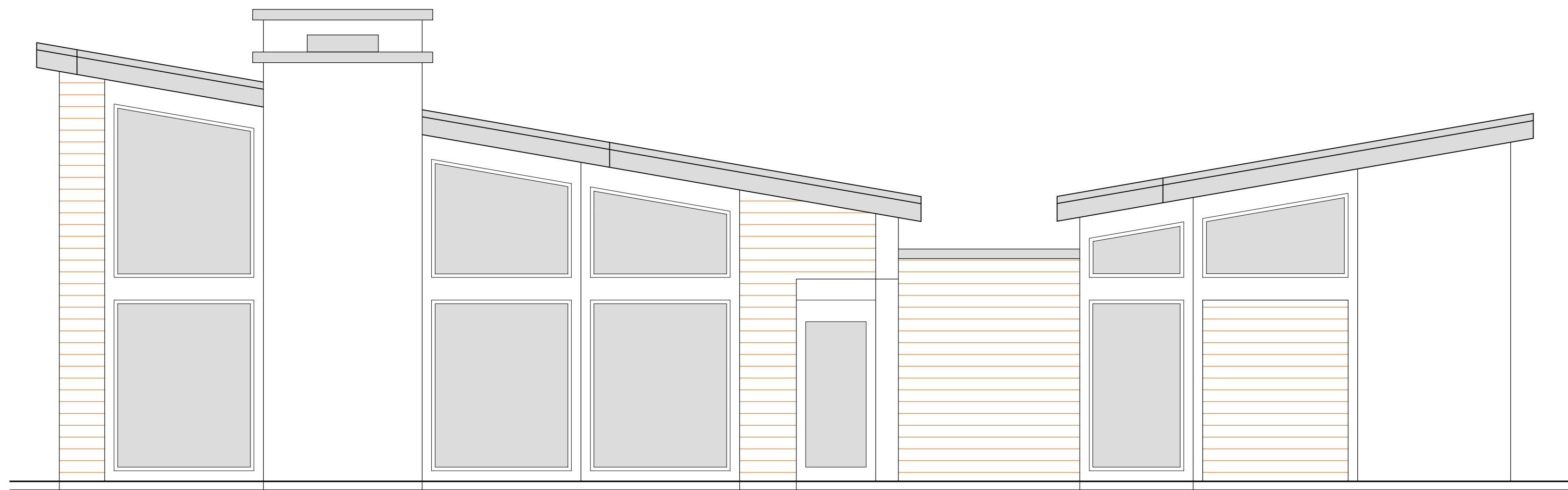
PROJECT NUMBER

DRAWING TITLE  
**EXTERIOR  
 ELEVATIONS**

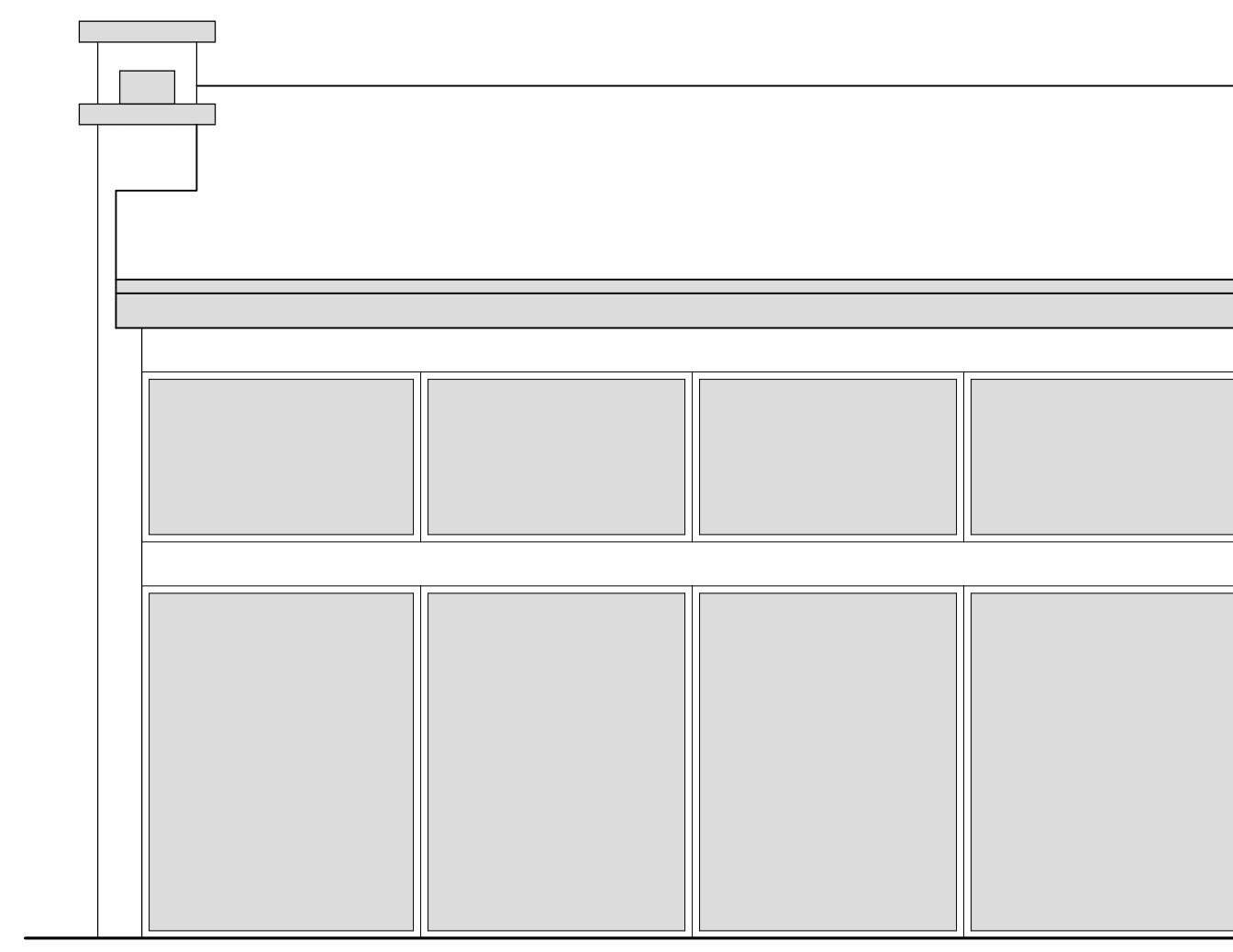
SHEET NO.

SCALE 1/4" = 1'-0"

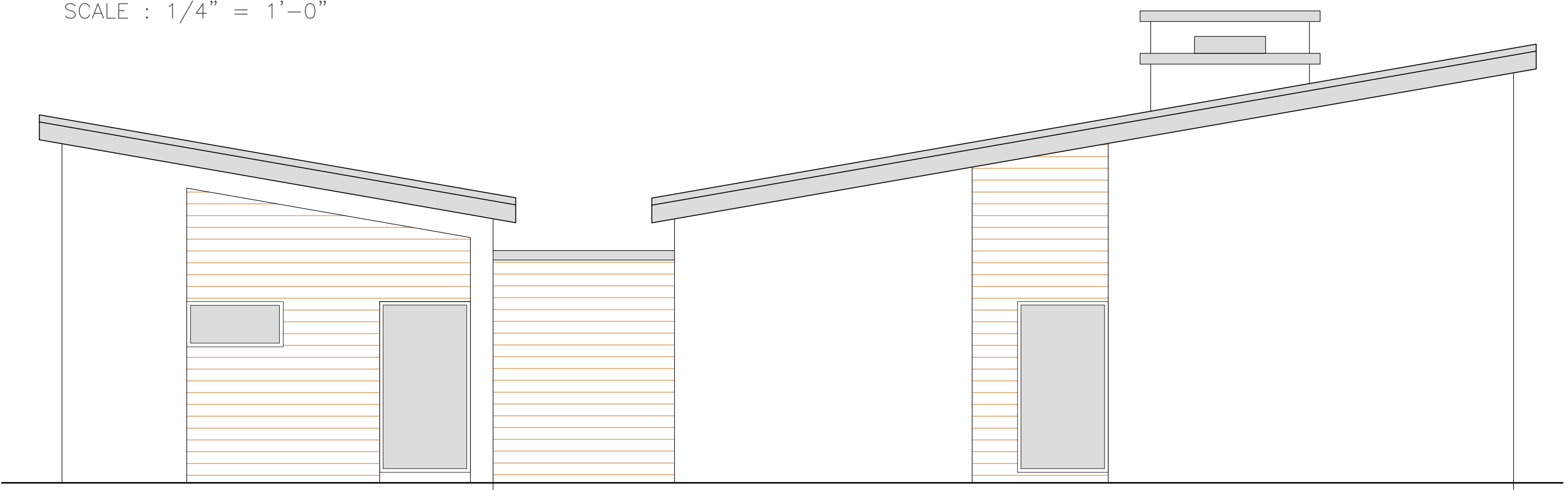
DATE 08.15.15



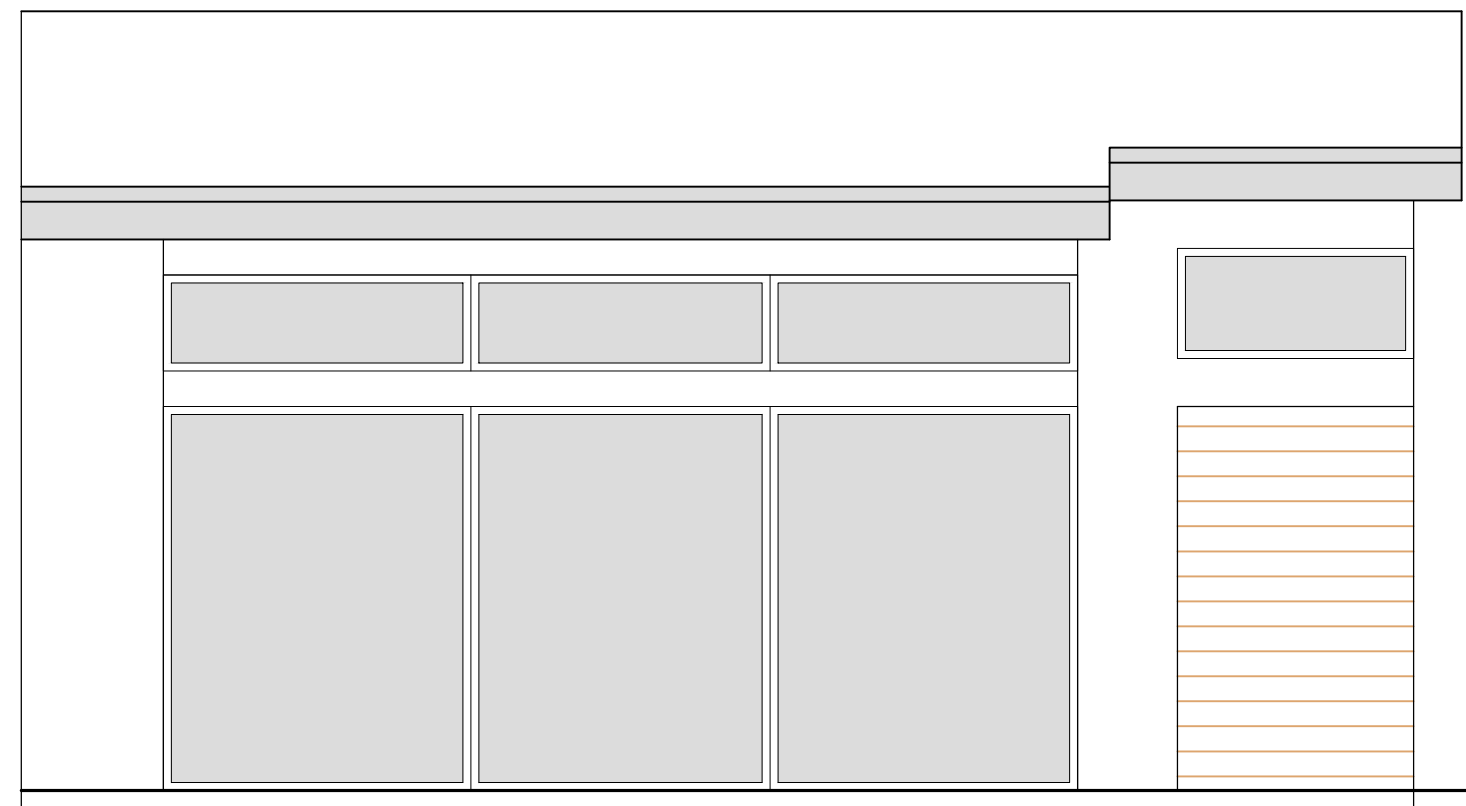
FRONT ELEVATION  
 SCALE : 1/4" = 1'-0"



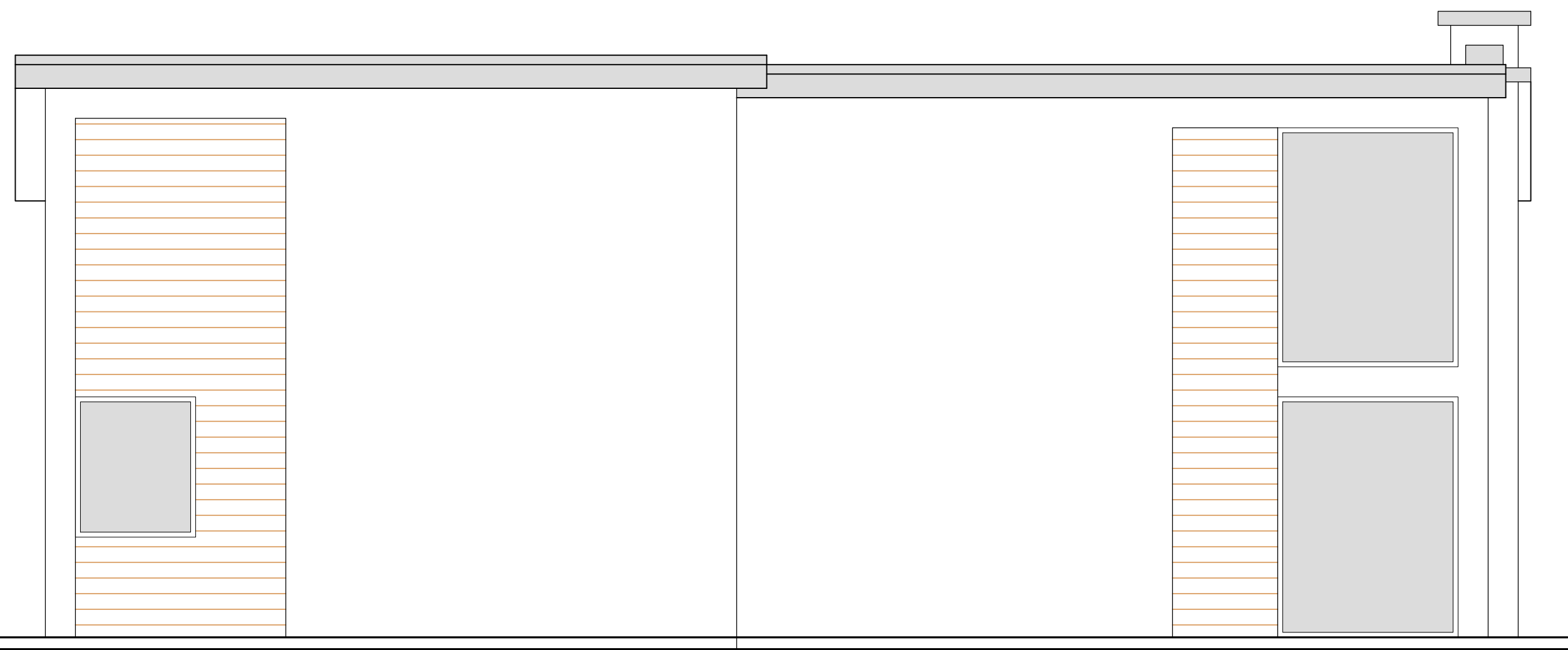
LEFT RETURN WALL ELEVATION  
 SCALE : 1/4" = 1'-0"



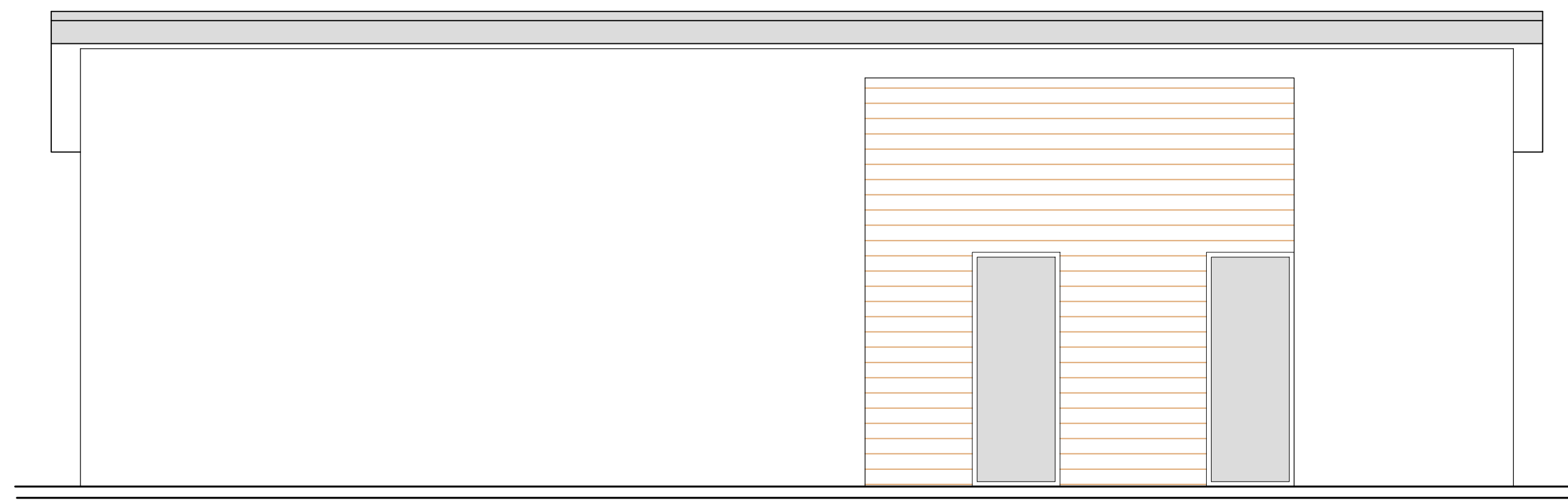
REAR ELEVATION  
 SCALE : 1/4" = 1'-0"



RIGHT RETURN WALL ELEVATION  
 SCALE : 1/4" = 1'-0"



LEFT ELEVATION  
 SCALE : 1/4" = 1'-0"



RIGHT ELEVATION  
 SCALE : 1/4" = 1'-0"

Copyright © 2015 Innovative Timber Frame Homes Ltd. T/A Innovative Home Solutions:  
 These Designs, Plans and Drawings are the exclusive Property of Innovative Timber Frame Homes Ltd.  
 T/A Innovative Home Solutions and are protected by copyright under EU, UK and Irish copyright and other laws.  
 They may not be reproduced, distributed, published, modified, used to create derivative works or transmitted  
 in any form or by any means, including photocopying, or other electronic or mechanical methods, wholly or in  
 part, without the prior written consent of Innovative Home Solutions.