

Innovative Home Solutions
18 Seagahan Road
Armagh, BT60 2BH
T: +44(0)28 3755 1482
E: info@innovativehomesolutions.co.uk
W: www.innovativehomesolutions.co.uk

CLIENT
Innovative Timber
Frame Homes

PROJECT
The Harvey Norman
Connected Home

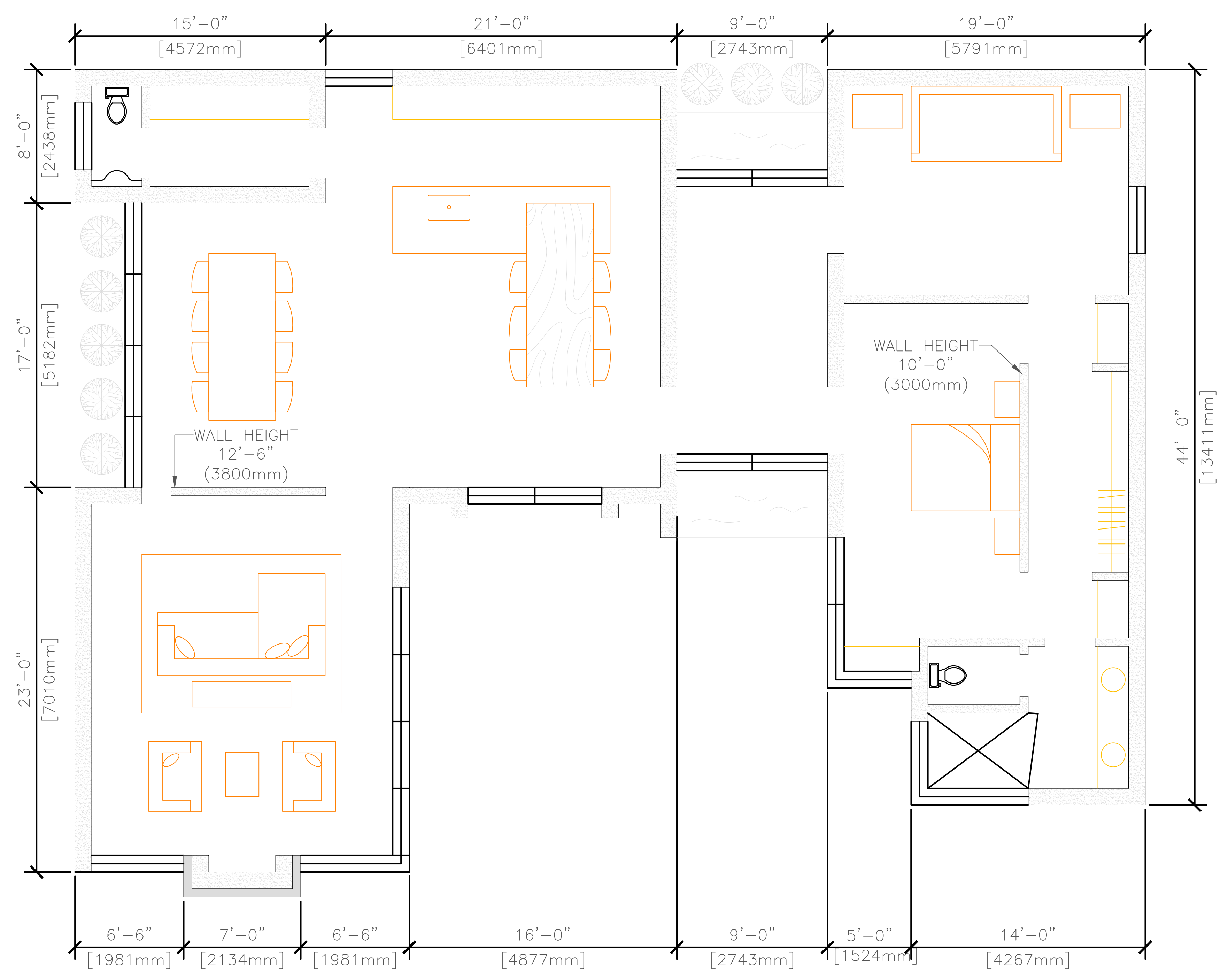
Design & Build by
Innovative Home Solutions
Spring 2016

REVISIONS

PROJECT NUMBER

DRAWING TITLE
FLOOR PLAN

SHEET NO.
SCALE 1/4" = 1'-0"
DATE 22.01.2016



FLOOR PLAN
SCALE : 1/4" = 1'-0"

Copyright © 2016 Innovative Timber Frame Homes Ltd. T/A Innovative Home Solutions:
These Designs, Plans and Drawings are the exclusive Property of Innovative Timber Frame Homes Ltd.
T/A Innovative Home Solutions and are protected by copyright under EU, UK and Irish copyright and other laws.
They may not be reproduced, distributed, published, modified, used to create derivative works or transmitted
in any form or by any means, including photocopying, or other electronic or mechanical methods, wholly or in
part, without the prior written consent of Innovative Home Solutions.